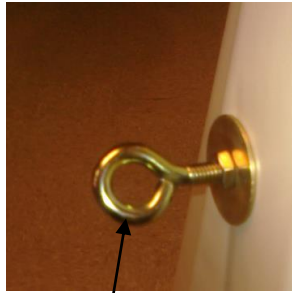


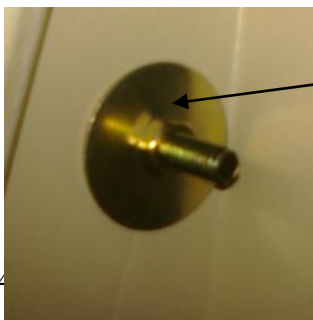
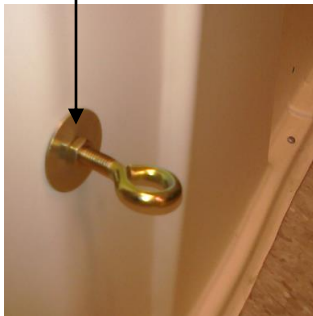
## Calf-Tel Fence Attachment



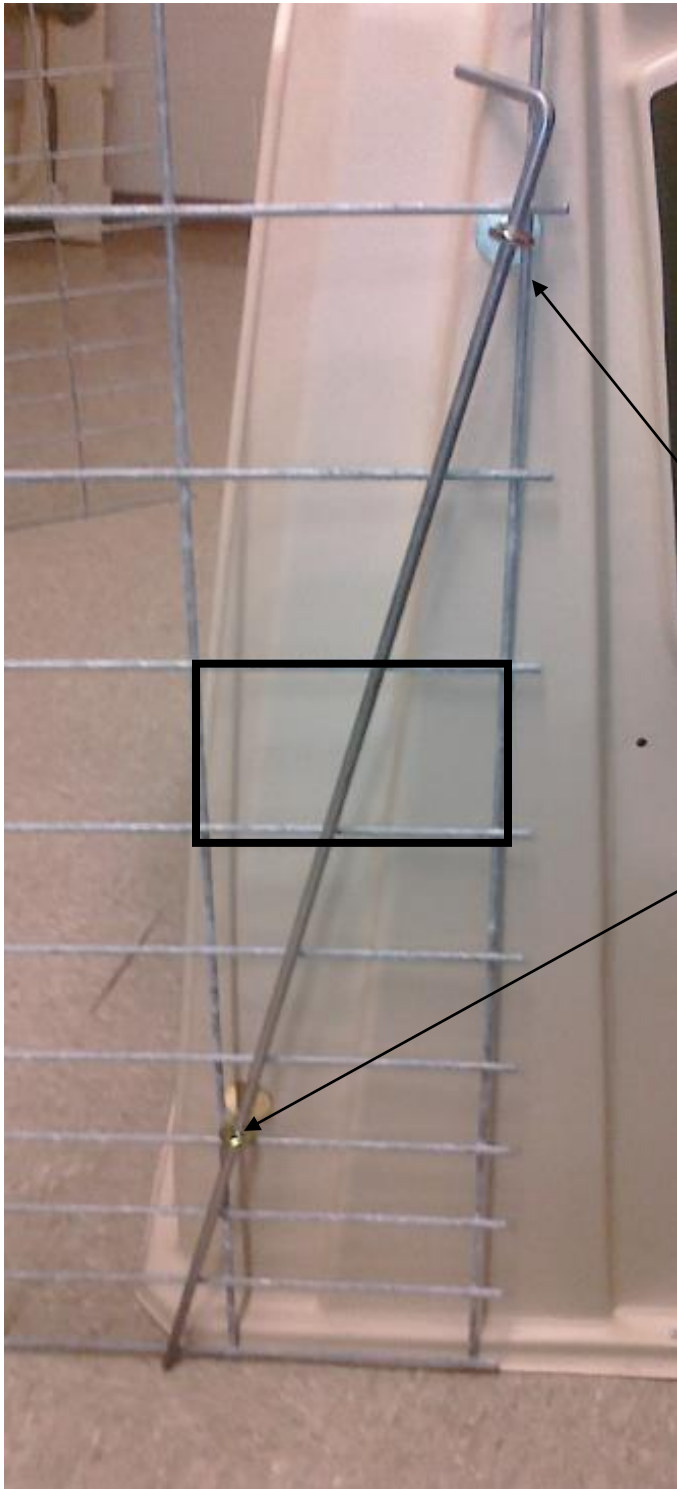
Thread on a nut, lock washer, and then the fender washer...insert eyebolt into hole in hutch.



Large Fender washer is installed against the hutch on the outside; then a lock washer is installed and the nut is installed on top of the lock washer the nut is installed on top of the fender washer...this helps adjust the eyebolt out to the correct distance...approx. 1.5" to the center of the eye on the top and 1.75" to the center of the eye on the bottom



Large Fender washer is installed against the hutch on the inside the hutch as well; then a lock washer is installed and the nut is installed on top of the lock washer and fender washer...this helps tighten the eyebolt in place once the desired location is established on the outside.



Fence is locked into position when the upper eyebolt and the lower eyebolt are within one section on the fence...this keeps the fence from moving forward or backwards. Black box represents a section on the fence.

