



Calf-Tel Access Door Assembly Instructions CH-3350-1-INST

CH-3335 Bill of Material:

Item	Hampel Item Number	Description	Qty
1	CH-3335	Access Door	1
2	CH-9400	Access Door Kit	1
3	CH-4510	Rod, Access Door	1

Step 1: Assemble Door Hinge:

holes in Door.
vn in Figure 1.

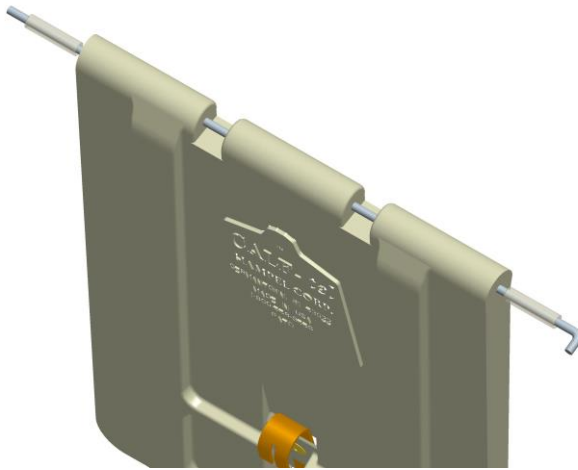
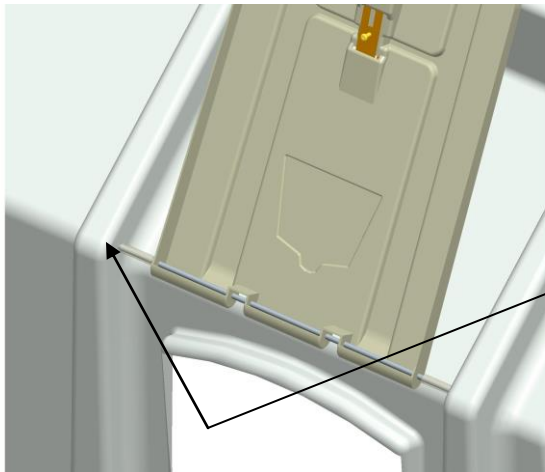


Figure 1

Step 2: Assemble to Calf-Tel Hutch

- A. Insert bent end of Rod into hole on Hutch. (See Figure 2)
- B. Slide Door Assembly over to insert straight end of Rod into hole on Hutch.
- C. From inside hutch, place clip over straight end of Rod



Assemble clip
from inside of
hutch

Figure 2

Note: Feed Pail Back Plate must be installed for latch to operate.