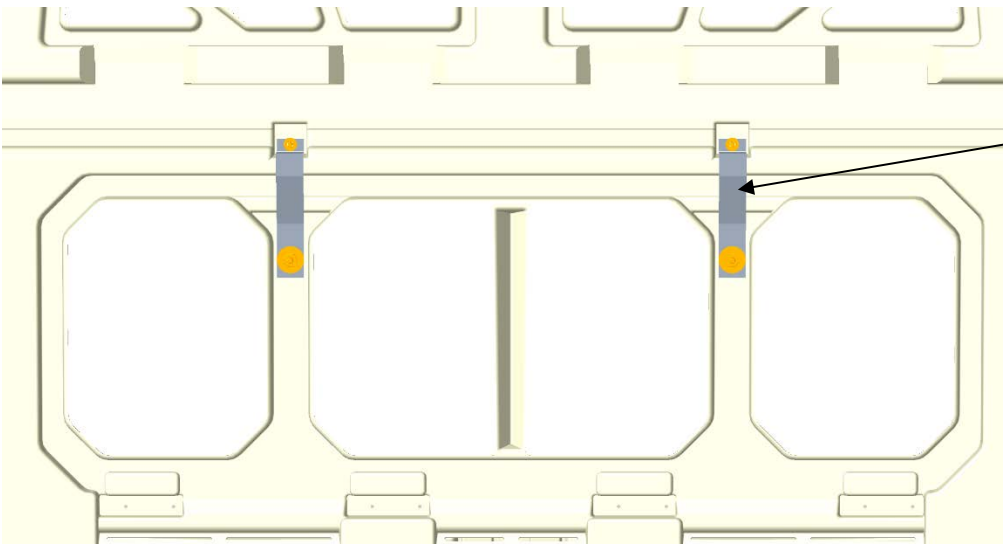
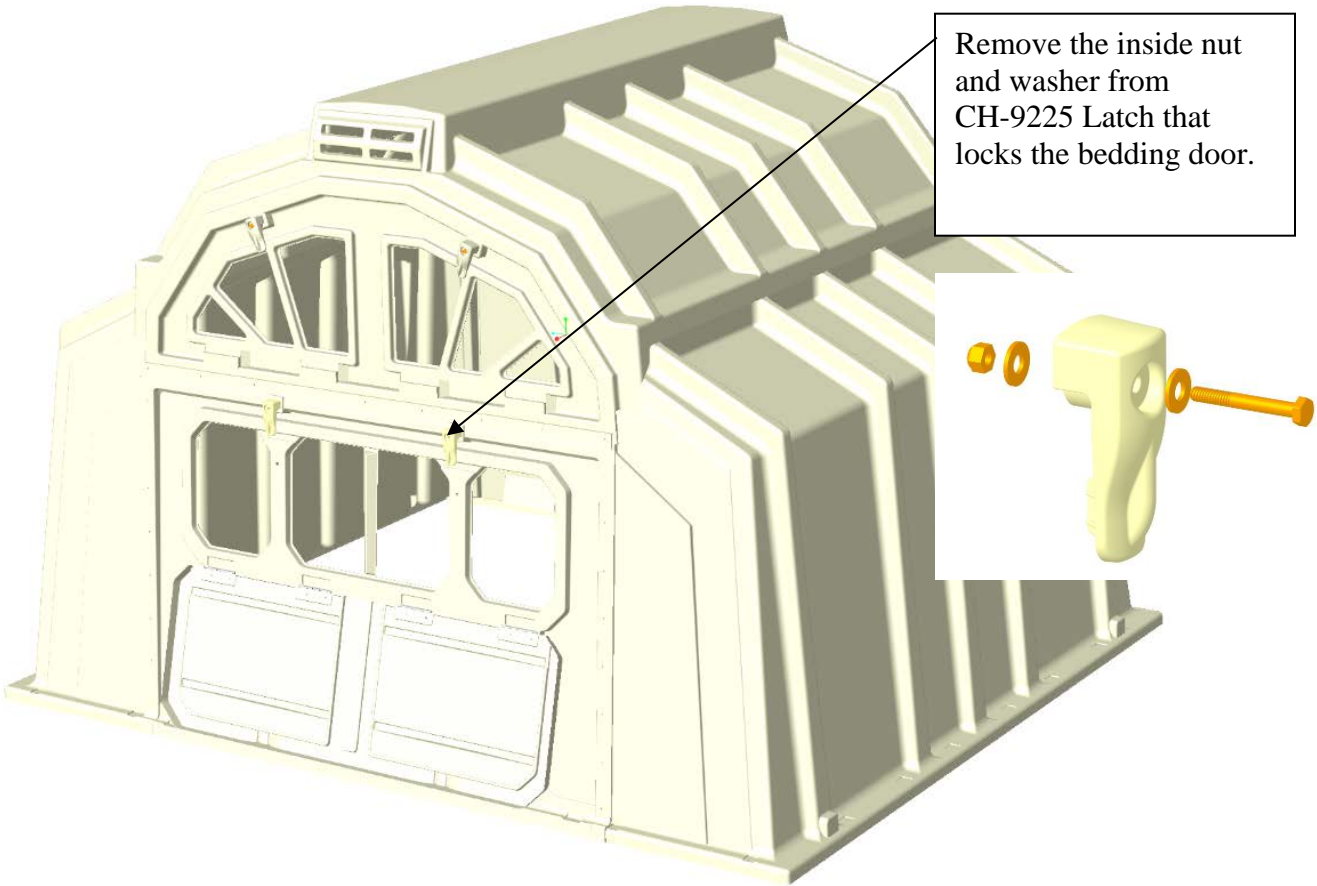




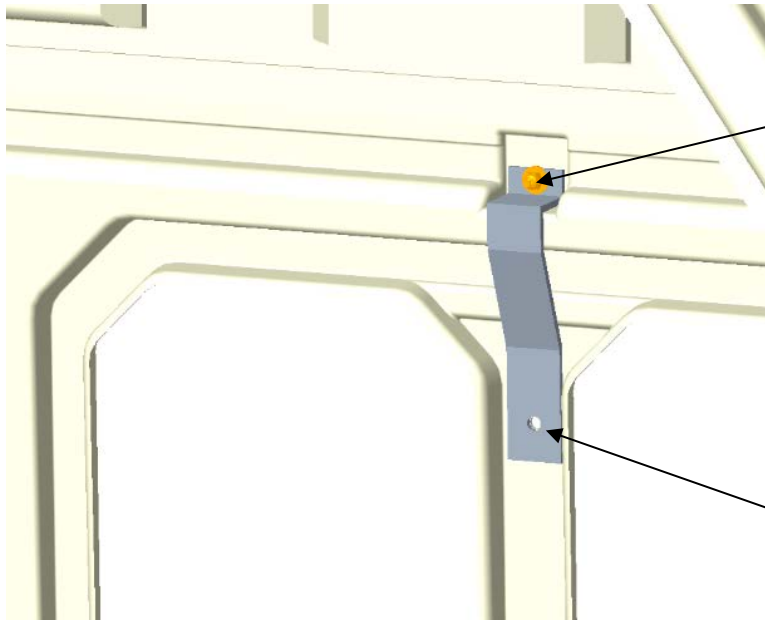
## 54|98 Reinforcement Bracket



Reinforcement Bracket  
Installed in 2 locations  
on the inside of the unit  
using CT-10037 and  
CT-HDWE-037.

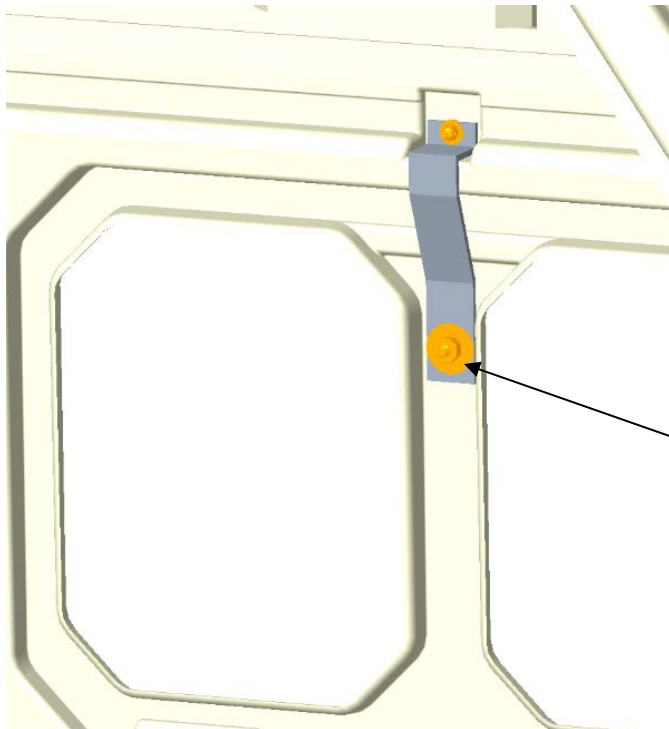


Remove the inside nut  
and washer from  
CH-9225 Latch that  
locks the bedding door.



Install Reinforcement Bracket (CT-10037) as shown and reinstall nut and washer to Latch.

Using a 5/16" dia drill bit, drill a hole through the plastic using the hole in the Reinforcement Bracket as a guide.



Attach Bracket to plastic with the CT-HDWE-037 hardware kit. Insert bolt from outside using a washer and tighten the nut on the inside.